

- Idaho Endowment Forestlands
- Managed by the Idaho Department of Lands (IDL)

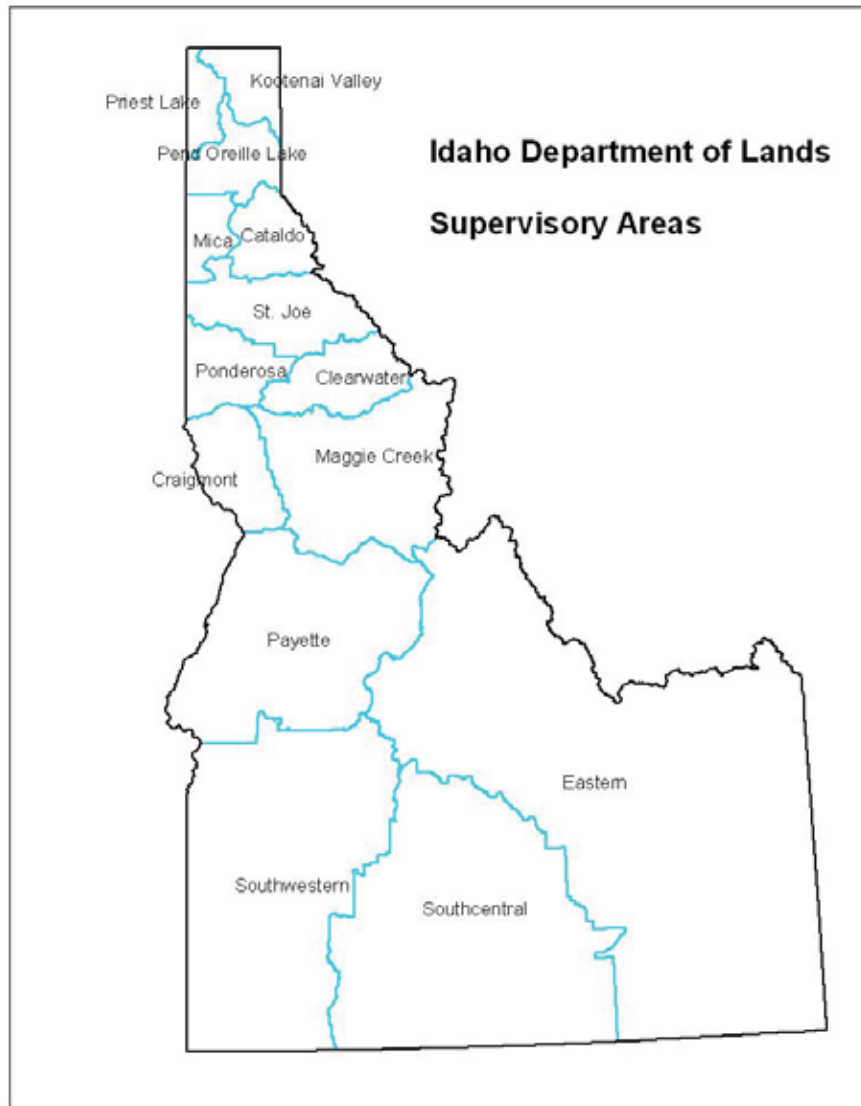
- In 1890, the President of the United States signed the Idaho Admission Bill declaring the formal existence of the State of Idaho. The Admission Bill granted the new state selected lands, including the equivalent of two of every 36 square miles of federally owned land in Idaho. These lands were acquired under a trust agreement whereby proceeds from these lands would exclusively benefit certain designated public institutions, primarily public schools. This trust agreement, as defined in federal statutory laws and the state constitution, stipulates that Idaho's state lands be managed "... **in such manner as will secure the maximum long term financial return to the institution to which granted...**" This mandate is more specific than the federal policy of managing federal lands for attainment of maximum benefits for the public.

- Idaho Endowment Forestland

- 10 Endowments – Largest being Public Schools

IDL

**14 Supervisory Areas
Priest Lake – Eastern Idaho**



- 3 Timber Management Bases

1. Primary Base - base for the annual harvest level

2. Secondary Base- Land with no access, high elevation low growth, and helicopter ground.

3. Non-forest - Rock, water, highways, etc

State Endowment Lands

Acres

10/17/2006

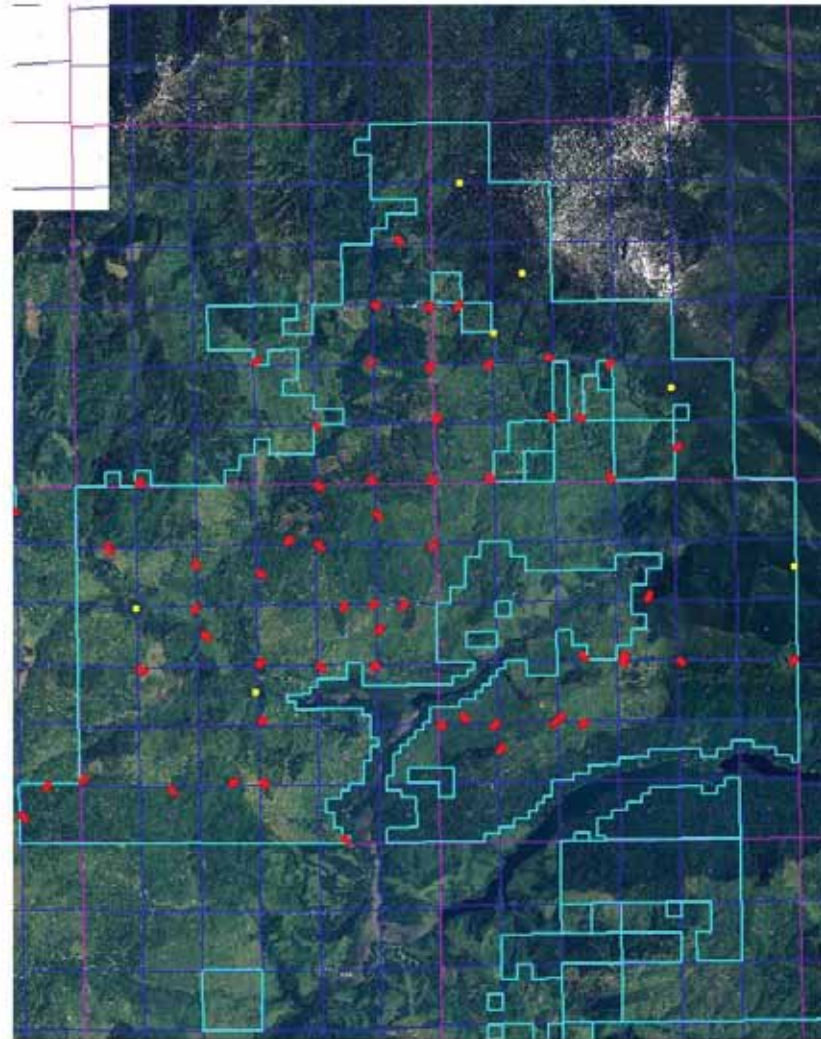
Date of Inventory	Area	Primary	Secondary	Non-Forest	Total
2005	Priest Lake	96,929	58,623	27,172	182,724
2005	Kootenai Valley	19,850	5,912	567	26,329
2005	Pend Oreille Lake	51,121	9,070	1,223	61,414
2005	Mica	15,252	1,339	123	16,714
2001	Cataldo	24,019	5,160	2,479	31,658
2001	St Joe	108,023	17,103	5,510	130,636
2004	Ponderosa	66,497	2,161	1,976	70,634
2004	Clearwater	106,437	9,924	1,803	118,164
2004	Maggie Creek	53,104	5,567	4,315	62,986
2004	Craig Mountain	19,685	4,924	19,465	44,074
2003	Payette Lakes	74,949	30,776	78,355	184,080
2002	Southwestern	58,616	13,110	430,568	502,294
	South Central		4,530	297,235	301,765
2006	Eastern Idaho	44,551	88,940	597,540	731,031
	Total	739,032	257,139	1,468,331	2,464,502
	Northern Operations	381,690	99,368	39,050	520,108
	Southern Operations	357,342	157,771	1,429,281	1,944,394

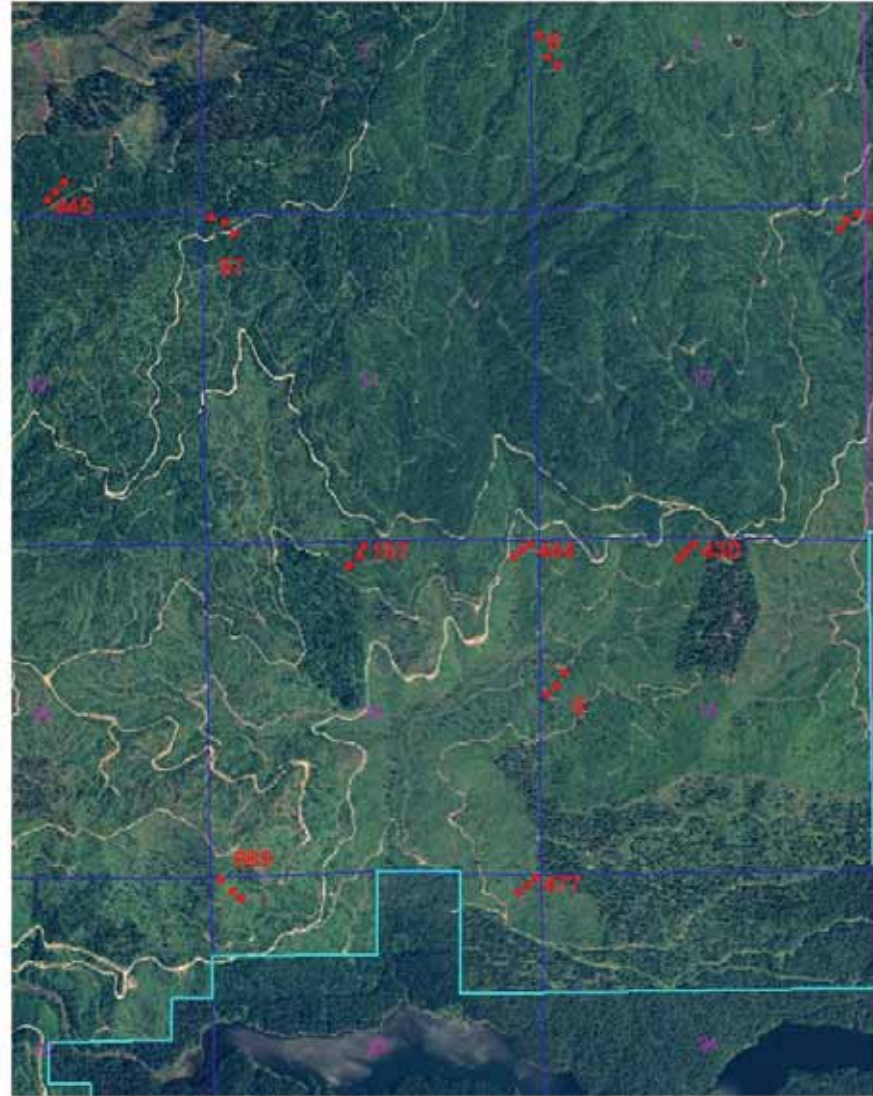
- Initial Permanent Continuous Forest Inventory (CFI) Plots were established in 1964.
- Currently there are over 1,000 CFI plots
- Each plot consists of 3 subplots
- All plot centers are marked and all trees 3 inches and larger are tagged and painted with a number.



- Reference off of a section corner or quarter corner. 3 chains apart (198 feet)
- 5 year remeasurement cycle on the CFI plots

Floodwood State Forest





- 3 Supervisory Areas also have a stand based inventory system.
- Priest Lake, Kootenai Valley, Ponderosa
- Stand level data provides volume
- CFI level data provides growth

- Sawtimber Stands
- Forest is timber typed into 9 sawtimber classes
- 11 through 13 large sawtimber size
- 11 is seed tree cut
- 13 is dense stands

Timber Type 11



Timber Type 13



- Timber Types 21 through 26
- Small sawtimber

Timber Type 24



Timber Type 22



Timber Type 23



Timber Type 26



- 8 timber types for regeneration
- 31 through 33 is the pole class
- 3 through 7 inches in DBH

Timber Type 32





- 3 sapling timber types
- 41 through 43

Timber Type 42



Timber Type 50



Timber Type 60

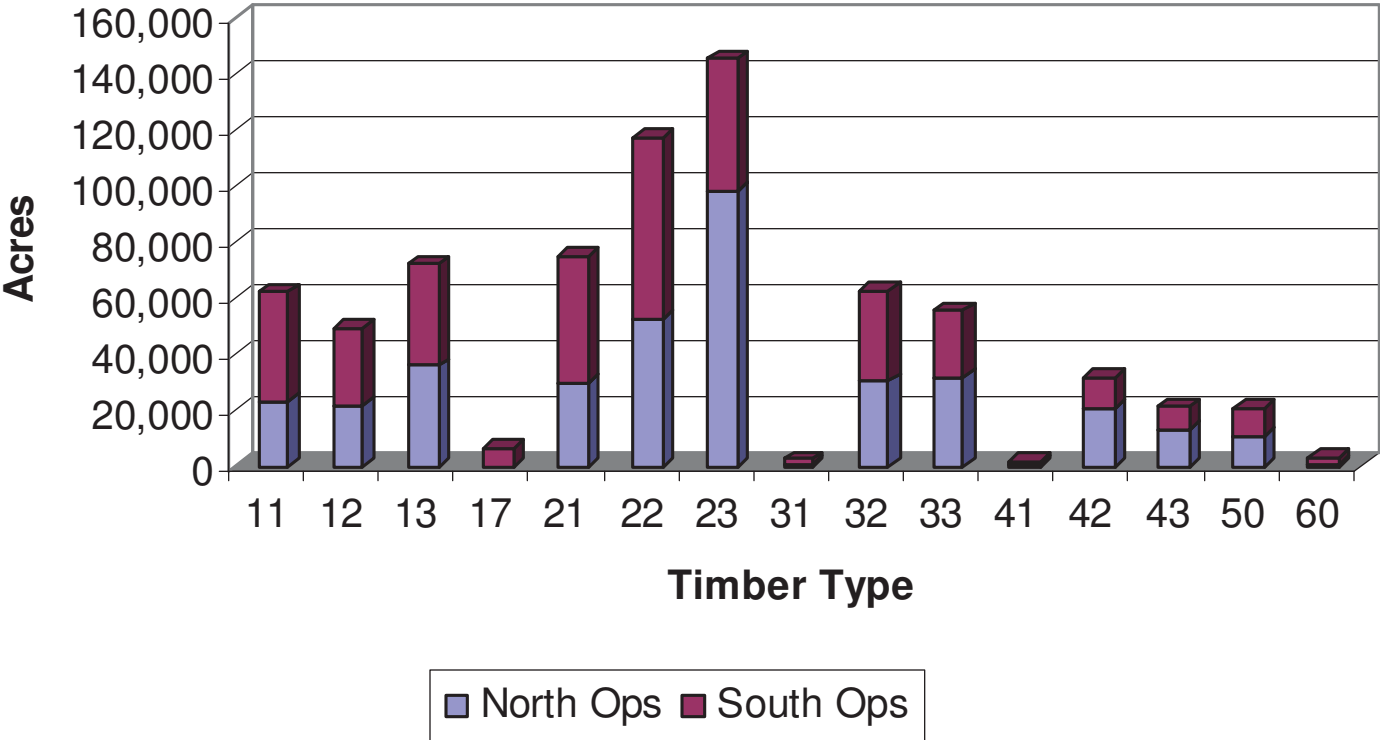


Non-forest



- Primary Base Forestland
- 739,032 acres (GIS acres)

Acres by Timber Type



State Endowment Lands
Species Volume by Supervisory Area (MBF)

10/16/2006

Date of Inventory	Area		Subalpine Fir	Western Red Cedar	Douglas-Fir	Engelmann Spruce	Grand Fir	Lodgepole Pine	Ponderosa Pine	Western Hemlock	Western Larch	Western White Pine	Total Volume
2005	Priest Lake	96,929	19,650	176,816	184,094	12,801	129,965	23,860	7,658	226,689	43,450	10,378	835,362
2005	Kootenai Valley	19,850	364	19,796	70,810	1,049	11,844	5,662	17,107	9,971	19,833	1,281	157,717
2005	Pend Oreille Lake	51,121	2,337	69,313	120,888	5,302	70,420	21,384	37,281	37,064	64,157	9,858	438,004
2005	Mica	15,252	-	27,832	41,898	-	63,465	466	20,372	12,123	13,574	2,630	182,360
2001	Cataldo	24,019	29	32,944	76,298	-	107,204	13,966	20,105	35,362	33,778	8,526	328,213
2001	St Joe	108,023	3,553	234,385	221,330	20,857	459,497	89,781	34,254	129,209	133,437	28,978	1,355,281
2004	Ponderosa	66,497	494	164,783	176,210	4,452	497,642	19,653	18,558	3,791	52,063	16,740	954,385
2004	Clearwater	106,437	4,455	183,827	284,953	21,206	589,802	6,189	16,557	-	65,067	16,462	1,188,518
2004	Maggie Creek	53,104	-	113,688	133,930	2,336	311,401	4,307	67,538	-	15,698	3,737	652,635
2004	Craig Mountain	19,685	-	-	39,990	3,153	55,291	356	48,211	-	2,247	-	149,248
2003	Payette Lakes	74,949	8,056	-	185,206	86,039	152,384	45,994	122,218	-	27,665	-	627,562
2002	Southwestern	58,616	9,047	-	124,730	9,163	61,411	10,410	250,491	-	-	-	465,253
	South Central	-	-	-	-	-	-	-	-	-	-	-	-
2006	Eastern Idaho	44,551	19,224	-	206,541	2,549	-	54,091	-	-	-	-	282,405
	Totals		67,209	1,023,384	1,866,879	168,909	2,510,324	296,119	660,350	454,208	470,971	98,590	7,616,943
	Percentage		0.01	0.13	0.25	0.02	0.33	0.04	0.09	0.06	0.06	0.01	
	Northern Operations		26,427	725,869	891,528	44,463	1,340,036	174,772	155,335	454,208	360,293	78,390	4,251,322
	Southern Operations		40,782	297,515	975,351	124,446	1,170,288	121,347	505,015	-	110,677	20,199	3,365,621

**Endowment Volume by Supervisory Area and DBH Class
Timber Types 11 - 26**

1/24/2007

Ops	Area	Volume (BD FT)				Total
		DBH 8 - 12	DBH 12 - 16	DBH 16 - 24	DBH 24+	
North	Cataldo	64,208,986	99,977,827	125,461,695	36,665,298	326,313,807
North	Kootenai Valley	28,439,698	43,428,900	63,140,364	20,507,317	155,516,279
North	Mica	15,105,598	32,608,043	90,443,931	40,077,112	178,234,684
North	Pend Oreille	70,729,625	121,768,815	156,489,114	67,772,532	416,760,086
North	Ponderosa	99,423,754	207,648,418	435,483,759	188,976,066	931,531,996
North	Priest	145,823,238	204,811,206	282,535,863	121,774,520	754,944,828
North	St Joe	213,044,961	347,222,593	484,631,737	285,330,300	1,330,229,591
North	Total	636,775,860	1,057,465,803	1,638,186,463	761,103,145	4,093,531,271
South	Clearwater	137,757,483	256,302,514	433,450,055	293,690,666	1,121,200,718
South	Craigmont	11,533,746	25,160,330	72,082,871	38,196,343	146,973,290
South	Eastern Idaho	46,287,860	78,601,113	106,420,224	40,391,370	271,700,566
South	Maggie Creek	61,888,127	115,831,482	279,651,508	181,202,859	638,573,976
South	Payette Lakes	81,028,148	126,410,017	236,825,681	174,804,605	619,068,451
South	Southwestern	31,852,820	89,271,453	196,177,666	145,404,850	462,706,789
South	Total	370,348,184	691,576,909	1,324,608,005	873,690,692	3,260,223,790
Statewide	Total	1,007,124,044	1,749,042,712	2,962,794,468	1,634,793,837	7,353,755,061

State Endowment Lands

1/24/2007

North Ops					
Timber Type	Acres	Net Volume (MBF)	Total Value (\$)	Net Growth (MBF)	Mortality (MBF)
Roads	9,466.1	-	-	-	-
TT 11	23,233.2	160,140.3	48,508,606.64	4,675.9	2,606.4
TT 12	21,769.8	279,681.8	86,273,655.27	7,054.3	1,629.2
TT 13	35,991.1	1,018,338.2	313,156,817.15	10,828.5	5,714.9
TT 21	22,661.9	87,912.0	26,831,503.20	3,401.6	1,288.1
TT 22	44,027.5	389,167.0	110,148,557.85	15,937.0	2,308.2
TT 23	74,345.6	1,483,075.9	441,062,154.59	29,442.4	11,528.0
TT 24	7,319.7	30,639.3	9,017,429.20	658.4	1,470.0
TT 25	9,100.1	108,643.5	32,606,117.12	2,663.9	404.0
TT 26	23,763.7	536,248.8	160,091,121.44	7,107.7	4,104.8
TT 31	1,046.5	33.1	11,321.50	0.2	-
TT 32	30,467.1	65,339.8	18,195,589.54	2,779.0	266.1
TT 33	31,675.1	71,745.7	20,934,807.35	5,328.3	575.4
TT 41	928.2	149.1	42,809.03	-	-
TT 42	21,115.3	12,290.9	3,546,951.45	301.7	192.7
TT 43	12,971.1	5,392.0	1,632,306.84	179.1	24.7
TT 50	10,651.7	2,524.4	926,913.41	97.1	101.0
TT 60	1,156.5	-	-	-	-
TT 11 - 26	271,678.6	4,093,846.7	1,227,695,962.46	81,769.8	31,053.6
TT 31 - 60	110,011.4	157,475.1	45,290,699.13	8,685.3	1,160.0
Total	381,690.0	4,251,321.9	1,272,986,661.59	90,455.1	32,213.6
Avg Increase value per Acre(\$)((growth*avg stumpage)/acres)				70.96	

South Ops					
Timber Type	Acres	Net Volume (MBF)	Total Value (\$)	Net Growth (MBF)	Mortality (MBF)
TT 11	38,960.2	223,430.9	54,188,995.24	4,335.3	4,339.3
TT 12	27,806.6	399,526.2	98,989,934.46	5,309.8	3,785.1
TT 13	36,480.1	989,075.4	278,018,483.07	11,395.8	6,871.5
TT 17	6,763.9	118,840.5	41,445,556.40	2,772.5	882.6
TT 21	44,950.0	168,585.7	34,581,417.23	4,320.8	1,830.5
TT 22	64,156.6	554,263.5	127,286,975.02	15,539.0	3,784.8
TT 23	47,379.6	806,503.8	211,146,974.66	18,511.9	4,444.0
TT 31	1,811.2	237.9	39,306.19	12.4	11.3
TT 32	32,330.3	58,296.8	16,355,266.40	3,852.2	378.5
TT 33	24,092.9	41,064.5	11,237,035.03	2,325.5	238.3
TT 41	1,136.9	-	-	-	4.4
TT 42	10,544.3	2,385.5	716,073.98	247.6	105.5
TT 43	8,505.5	587.8	155,712.04	78.3	-
TT 50	10,179.2	1,107.1	260,475.90	186.1	130.7
TT 60	2,245.0	1,715.7	324,994.05	212.1	-
TT 11 - 26	266,497.0	3,260,225.9	845,658,336.09	62,185.0	25,937.8
TT 31 - 60	90,845.3	105,395.3	29,088,863.58	6,914.2	868.7
Total	357,342.2	3,365,621.2	874,747,199.67	69,099.2	26,806.5
Avg Increase value per Acre (\$)((growth*avg stumpage)/acr				50.26	

Statewide					
TT 11 - 26	538,175.6	7,354,072.7	2,073,354,298.55	143,954.8	56,991.3
TT 31 - 60	200,856.7	262,870.4	74,379,562.71	15,599.5	2,028.7
Grand Total	739,032.2	7,616,943.1	2,147,733,861.26	159,554.3	59,020.1
Avg Income per Acre(\$)((growth*avg stumpage)/acres)				60.88	
Total value from Growth (\$)				44,989,196.27	

- Current harvest level is 212 Million BF
- Last year return to the Endowments was \$59.5 Million
- Current value of the fund \$1.067 billion

- Objectives

- Drop growing stock from 7.6 Billion BF to approximately 5.3 – 6.0 Billion BF
- Raise growth rates from 159 Million BF to 200 – 212 Million BF