



# Washington DNR

## Forest Health and Timber Sales Update

**Dave Richards**  
**Denise Roush-Livingston**

Timber Measurement Society

Coeur d'Alene, Idaho

April 4-6, 2018

# Forest Health Today

- Eastern Washington forest health continues to be a threat to today's and future forests.
- 10,000,000 acres of forestland in E. Washington many of which are facing serious threats from fire, insects and disease.
- In 2015 Washington taxpayers paid \$89 million for fire fighting costs.





# Forest Health Policy



- 2004 – Commissioner of Public Lands designated as the lead to improve forest health.
- 2012 – The Forest Health Hazard Warning Areas are identified to help prioritize forest health investments.
- 2016 – Senate/House Bill 2376 provided funding and direction to develop a 20 Year Forest Health Strategic Plan
- 2017 – Senate Bill 5546 and House Bill 1711 were passed directing the DNR to assess and treat one million acres by 2033.
- 2017 – The DNR entered into agreement with the USDA Forest Service under the Good Neighbor Authority.

# 20-Year Forest Health Strategic Plan

## Mission

Restore and manage forested landscapes at a pace and scale that reduces the risk of uncharacteristic wildfires and increases the health and resilience of forest and aquatic ecosystems in a changing climate for rural communities and the people of Washington State.





# 20-Year Forest Health Strategic Plan

## Goal 1

Conduct 1.25 million acres of scientifically-sound, landscape-scale, cross-boundary management and restoration treatments in priority watersheds to increase forest and watershed resilience by 2037.



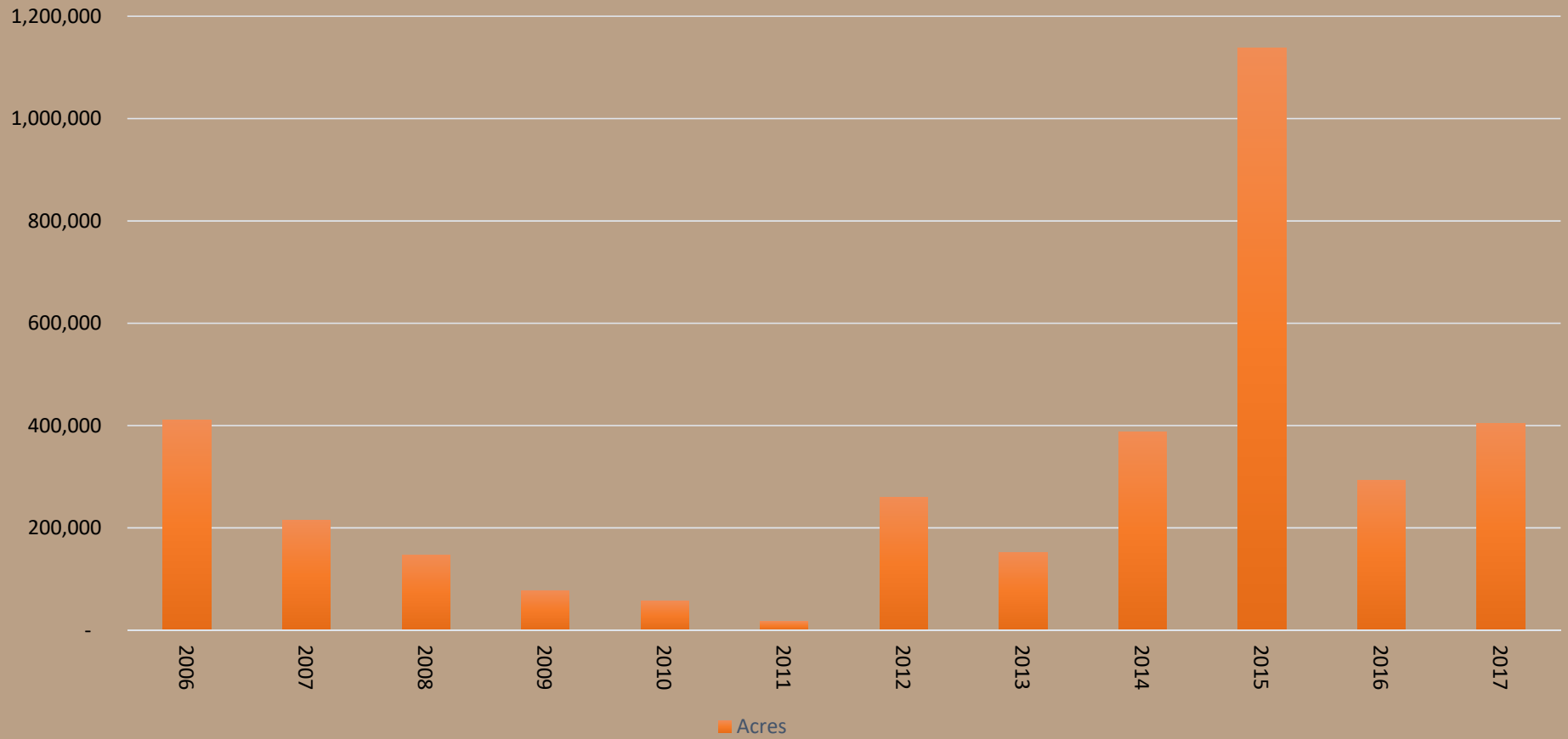
# 20-Year Forest Health Strategic Plan

## Goal 2

- Reduce risk of uncharacteristic wildfire and other disturbances to help protect lives, communities, property, ecosystems, assets, and working forests.



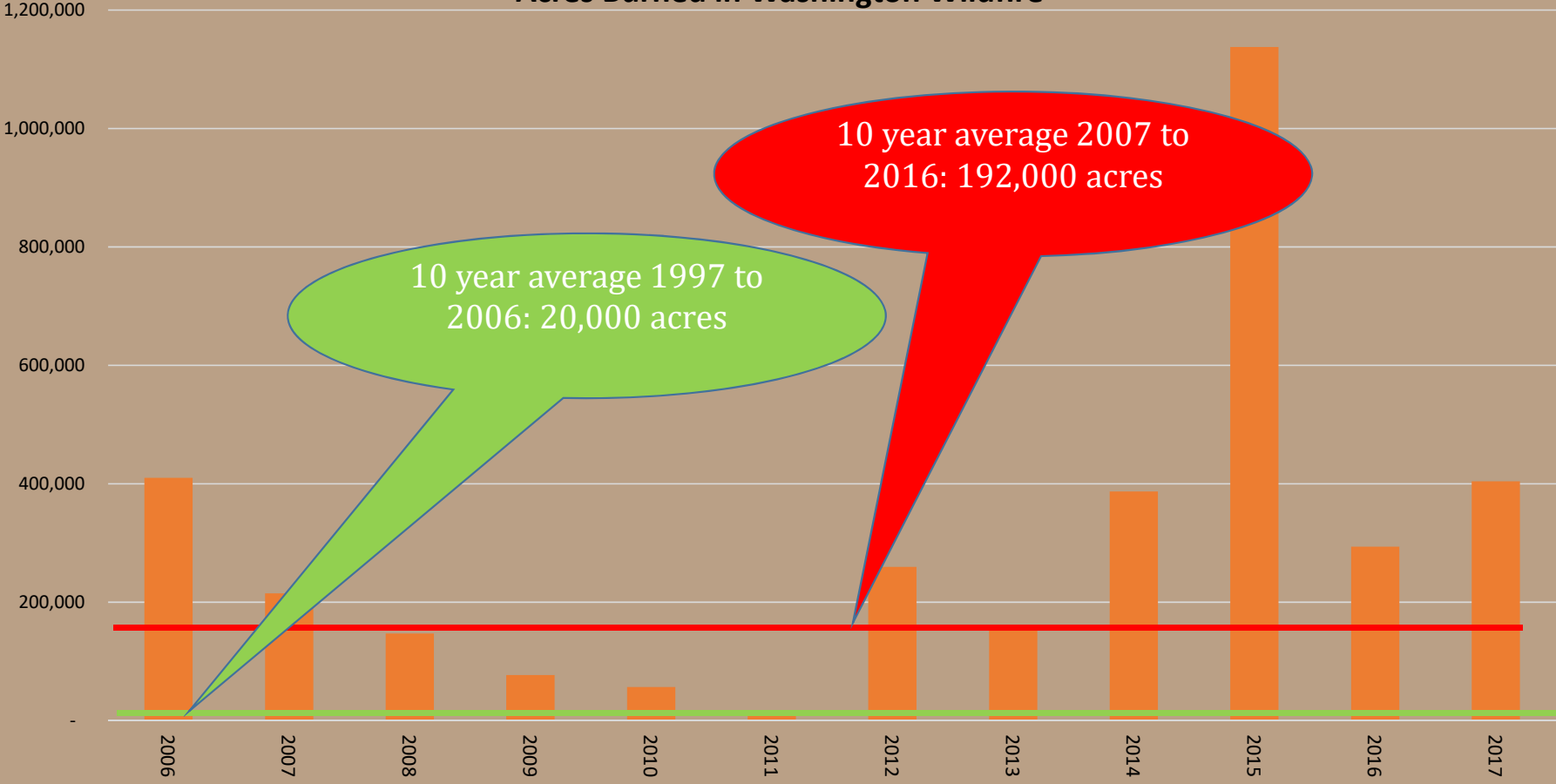
## Acres Burned in Washington Wildfire



NW Interagency Coordination Center: NW Annual Fire Report



### Acres Burned in Washington Wildfire



# 20-Year Forest Health Strategic Plan

## Goal 3

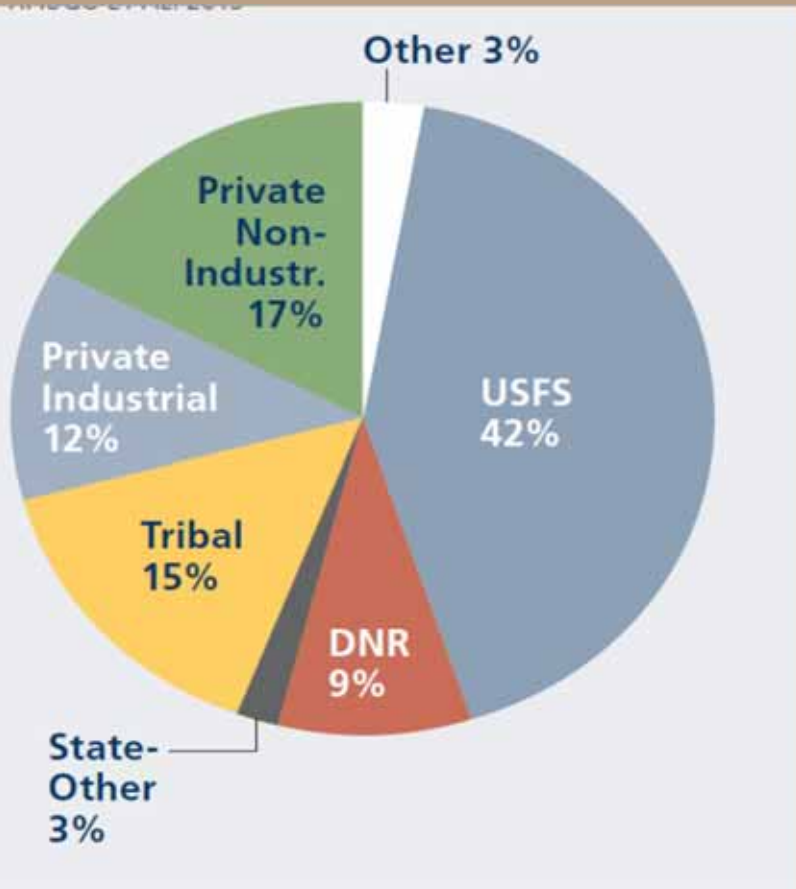
- Enhance economic development through implementation of forest restoration and management strategies that maintain and attract private sector investments and employment in rural communities.



# 20-Year Forest Health Strategic Plan

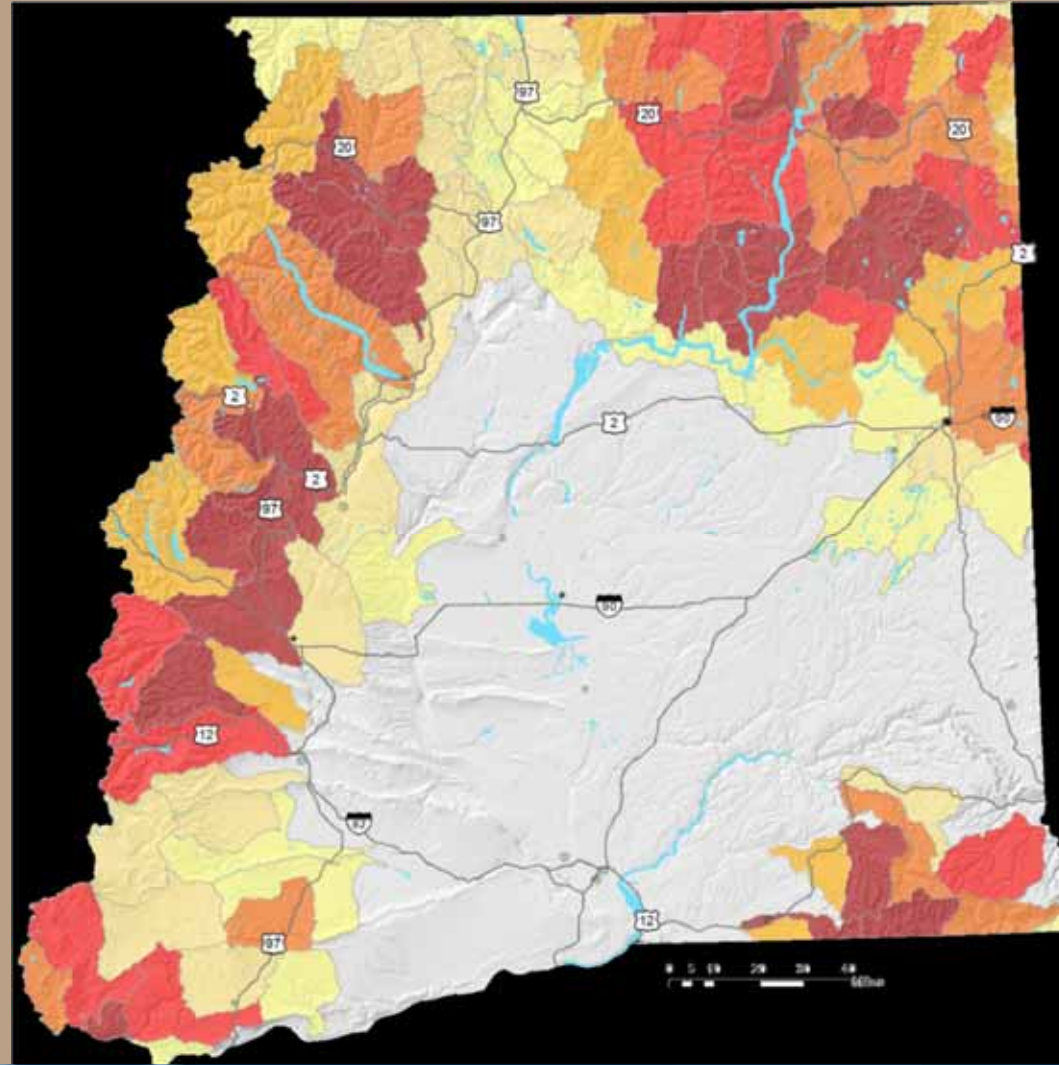
## Goal 4

- Plan and implement coordinated landscape-scale forest restoration and management treatments in a manner that integrates landowner objectives and responsibilities.





# EASTERN WASHINGTON FOREST HEALTH PRIORITY HUC 5 WATERSHEDS



# 20-Year Forest Health Strategic Plan

## Goal 5

- Develop and implement a forest health resilience monitoring program that establishes criteria, tools, and processes to monitor forest and watershed conditions, assess progress, and reassess strategies over time.





Want to learn more?

[www.dnr.wa.gov/ForestHealth](http://www.dnr.wa.gov/ForestHealth)





# Contract Harvest Program

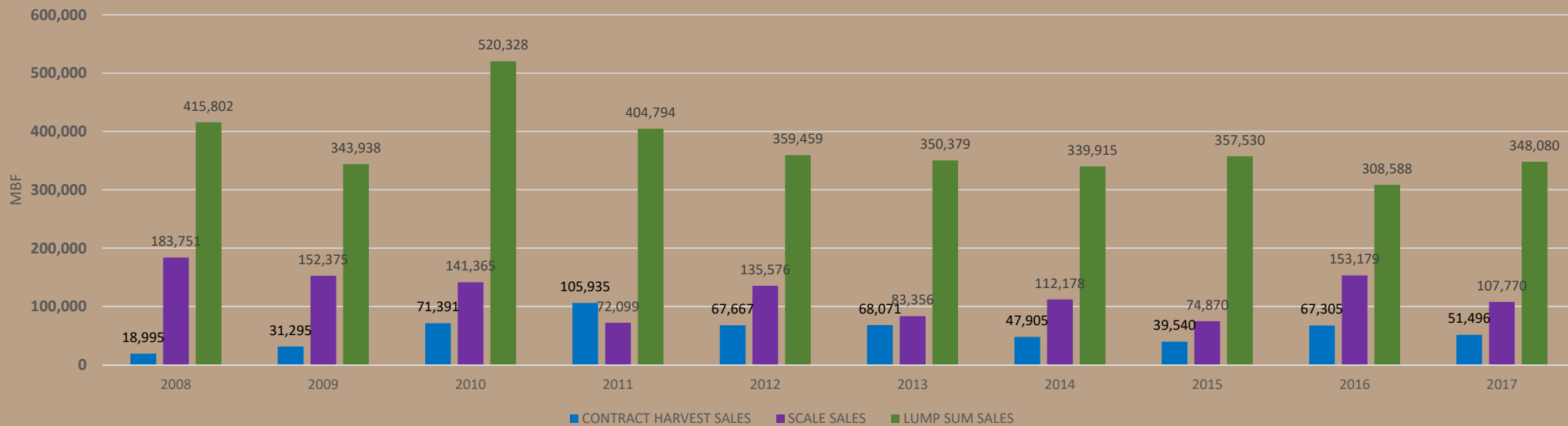


- 2004 Contract Harvesting added as a method of selling timber with the creation of the Revolving Account.
- 2017 Contract Harvest became a permanent tool for the DNR timber sales program.

# Contract Harvest Program

- Since 2007 more than 510 mmbf have been sold in the contract harvest program.
- Average of 54 mmbf sold each year.

Volume Sold by Sale Type

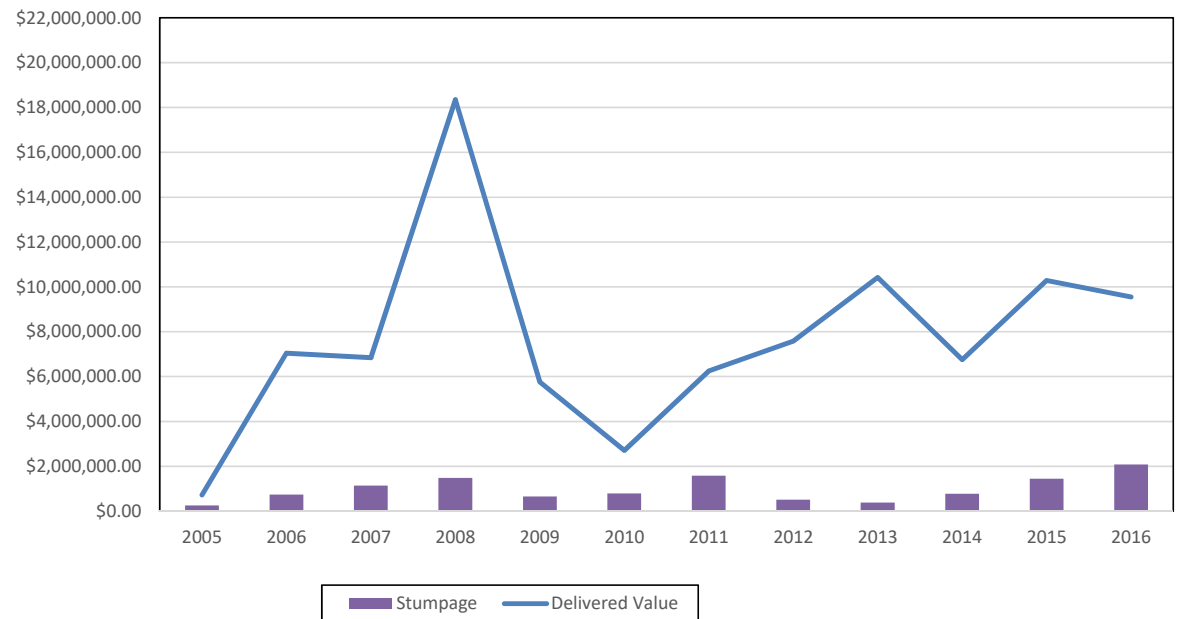


# Contract Harvest Program Revolving Account

## Delivered logs sales

Provides DNR a mechanism to pay costs up front and then distribute net proceeds to the trust beneficiaries

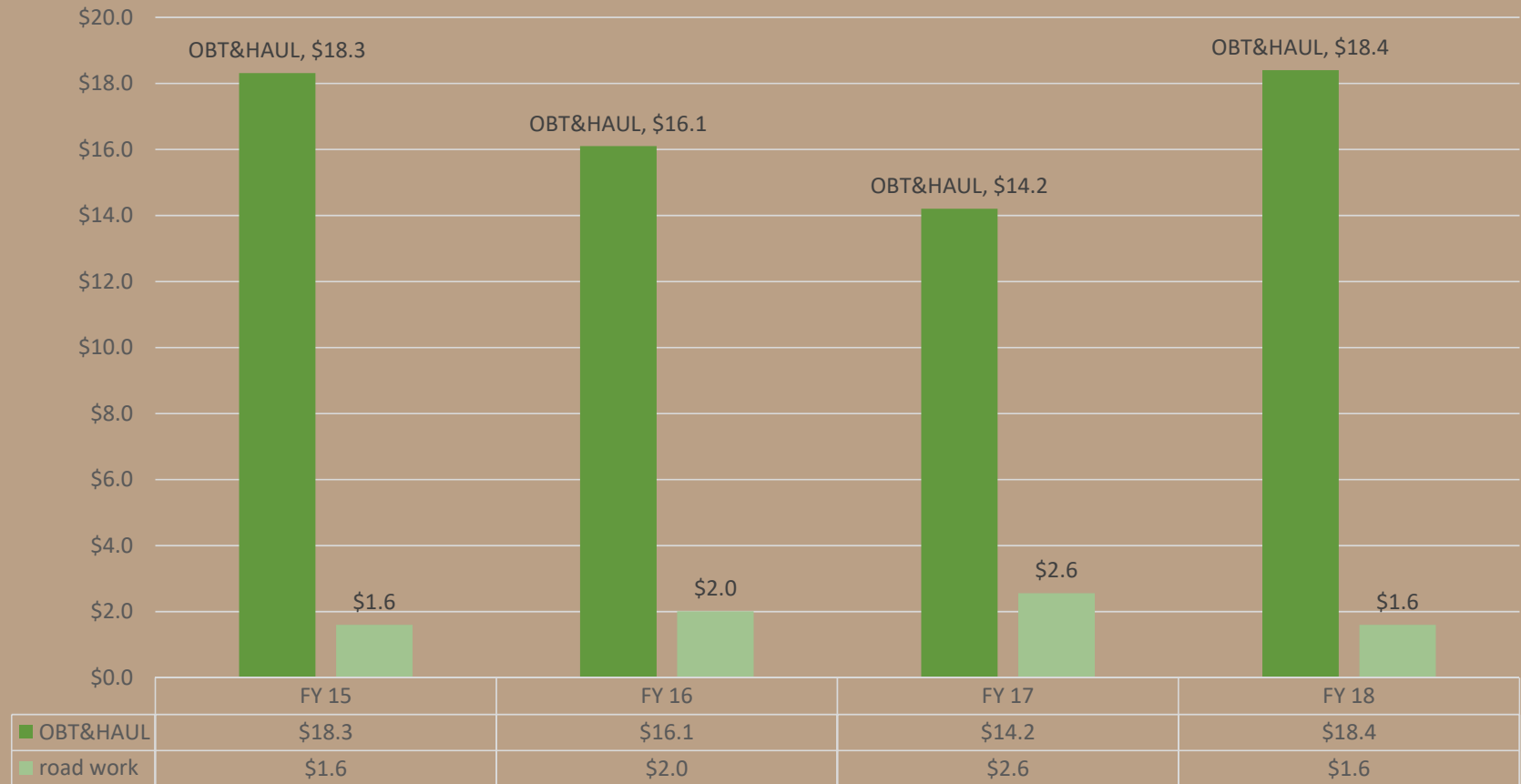
### FIT Program - Revolving Account Activity





**JK(2)**    **Make this Money**  
JONES, KEITH (DNR), 11/29/2017

# Harvester payments in millions



# Delivered Log Sales

WA DNR's purchaser base grew from 50-80 companies to over 130 purchasers which now includes many small mills

WDFW contracts with DNR to manage the log accounting on WDFW sort sales

Provides the DNR some flexibility in respect to the timing of revenue flow

Increased revenue

Data on each log and load is managed in house with the CT3 Log Management System

CT3 Log Management System  
Washington DNR

11:38:20 PAGE: 2  
dnrrou (WZ) 03/30/2018

Setting : TOPPER TOPPER SORTS

Setting Audit Report

	Load Receipt	Load Date	Prod	Destination	Production Measurement	Tkt	Net BF	- Supplier-	- Con Pay -	- Invoice-
								Cntl ID St	Cntl ID St	Number St
Book ID : PC 835601										
Issued : 02/13/2018										
Returned:										
Audited :										
	PC 835601	02/14/2018	SCAL	RSGK RSG Kalama	YH 3360622		4,810	CPWZ0586 F		PC002175 F
	PC 835602	02/14/2018	WWSL	SPI SPI Aberdeen	NW 58401501		4,130	CPWZ0586 F		PC002176 F
	PC 835603	02/15/2018	SCAL	RSGK RSG Kalama	YH 2603503		4,870	CPWZ0586 F		PC002175 F
	PC 835604	02/15/2018	WWSL	SPI SPI Aberdeen	NW 58401520		3,890	CPWZ0588 F		PC002176 F
	PC 835605	02/15/2018	SCAL	RSGK RSG Kalama	YH 2603512		4,630	CPWZ0586 F		PC002175 F
	PC 835606	02/15/2018	SCAL	BUSE Buse	NW 69531904		5,870	CPWZ0586 F		PC002171 F
	PC 835607	02/15/2018	SCAL	RSGK RSG Kalama	YH 3360654		4,980	CPWZ0586 F		PC002175 F
	PC 835608	02/16/2018	SCAL	BUSE Buse	NW 69531915		6,250	CPWZ0588 F		PC002171 F
	PC 835609	02/16/2018	WWSL	SPI SPI Aberdeen	NW 58401547		3,860	CPWZ0588 F		PC002176 F
	PC 835610	02/16/2018	SCAL	RSGK RSG Kalama	YH 2603537		5,770	CPWZ0588 F		PC002175 F
	PC 835611	02/19/2018	SCAL	RSGK RSG Kalama	YH 2603544		5,540	CPWZ0588 F		PC002175 F
	PC 835612	02/16/2018	SCAL	NWCE NW Cen	YH 6460373		3,210	CPWZ0588 F		PC002174 F
	PC 835613	02/19/2018	SCAL	BUSE Buse	NW 69531933		6,110	CPWZ0588 F		PC002171 F
	PC 835614	02/19/2018	SCAL	BUSE Buse	NW 69531938		6,060	CPWZ0588 F		PC002171 F
	PC 835615	02/20/2018	SCAL	RSGK RSG Kalama	YH 2603556		5,420	CPWZ0588 F		PC002175 F
	PC 835616	02/20/2018	SCAL	RSGK RSG Kalama	YH 3360690		5,610	CPWZ0588 F		PC002175 F
	PC 835617	02/20/2018	SCAL	BUSE Buse	NW 69531947		6,490	CPWZ0588 F		PC002171 F
	PC 835618	02/20/2018	SCAL	RSGK RSG Kalama	YH 2603558		5,220	CPWZ0588 F		PC002175 F
	PC 835619	02/20/2018	SCAL	BUSE Buse	NW 69531951		6,640	CPWZ0588 F		PC002171 F
	PC 835620	02/20/2018	WWSL	SPI SPI Aberdeen	NW 54500301		4,260	CPWZ0588 F		PC002176 F
	PC 835621	02/21/2018	SCAL	BUSE Buse	NW 69531961		6,020	CPWZ0588 F		PC002171 F
	PC 835622	02/22/2018	SCAL	BUSE Buse	NW 69531983		6,850	CPWZ0588 F		PC002171 F
	PC 835623	02/22/2018	SCAL	BUSE Buse	NW 69531984		5,980	CPWZ0588 F		PC002171 F

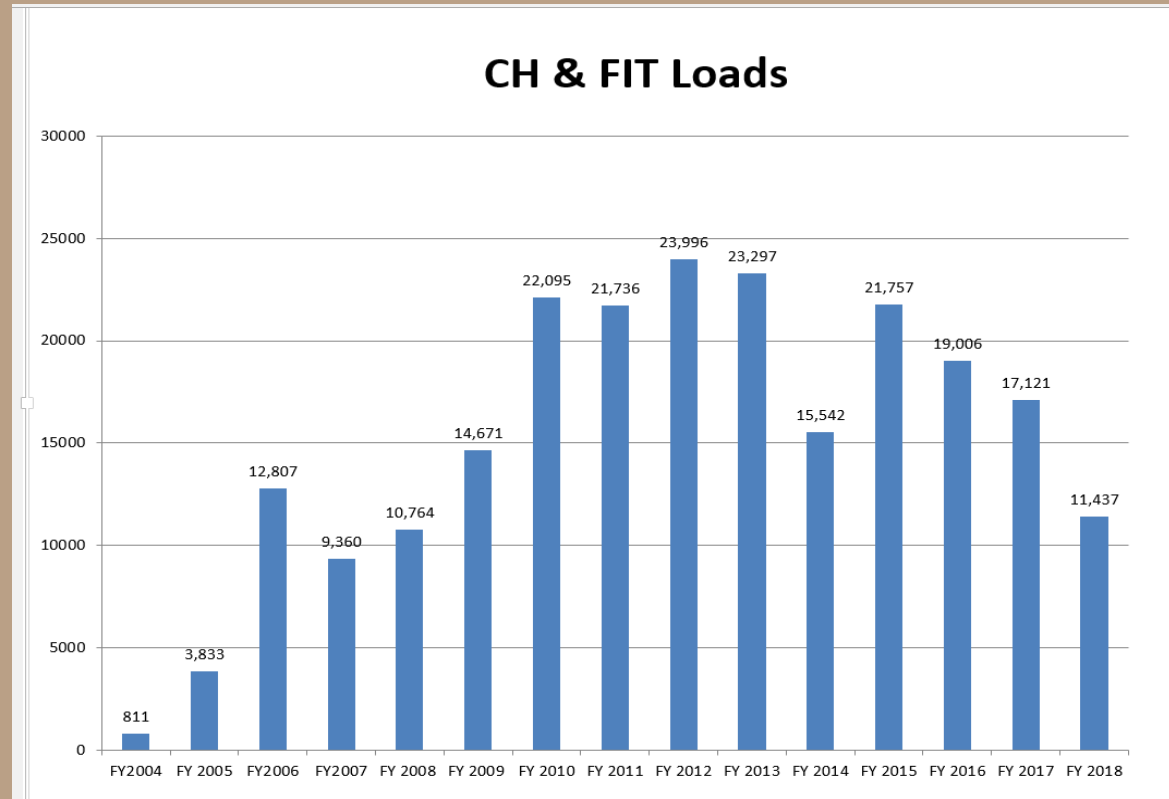


# Contract Harvest Program Growth

Limited by legislature to 20% of the sold volume per fiscal year

Depends on market conditions and product mix in a give sale

Daily reports are sent to compliance foresters  
Lengths, diameters and quality can be reviewed within 24 hours



# Questions ???

Contacts:

[www.dnr.wa.gov](http://www.dnr.wa.gov)

Product Sales and Leasing Division

David.richards@dnr.wa.gov

360-902-1365

Denise.roush-livingston@dnr.wa.gov

360-902-1675



