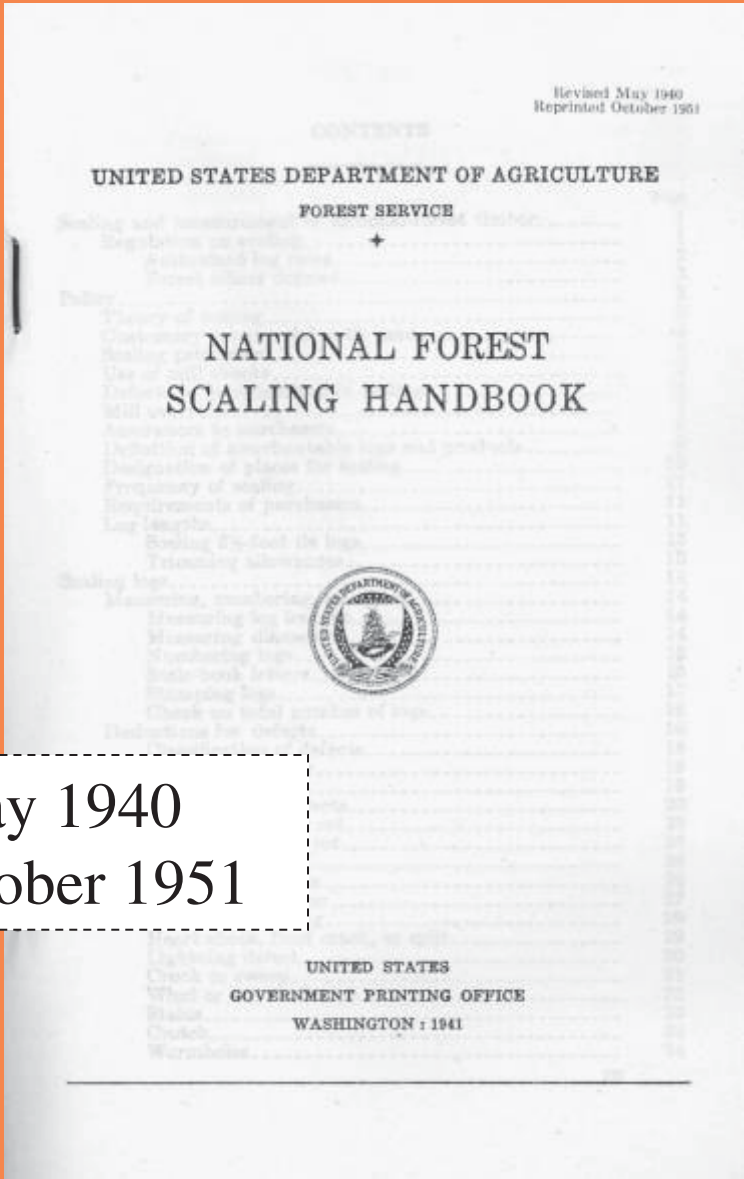
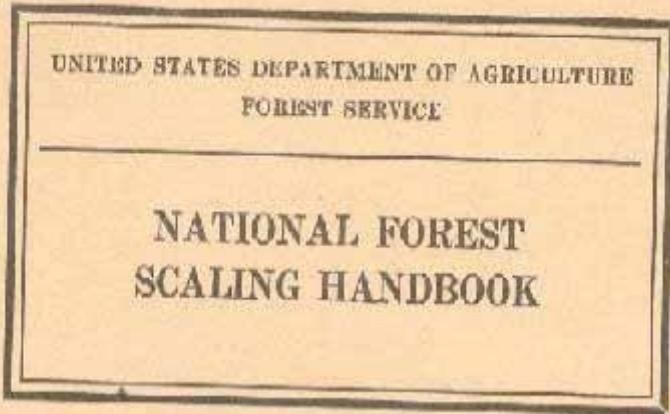


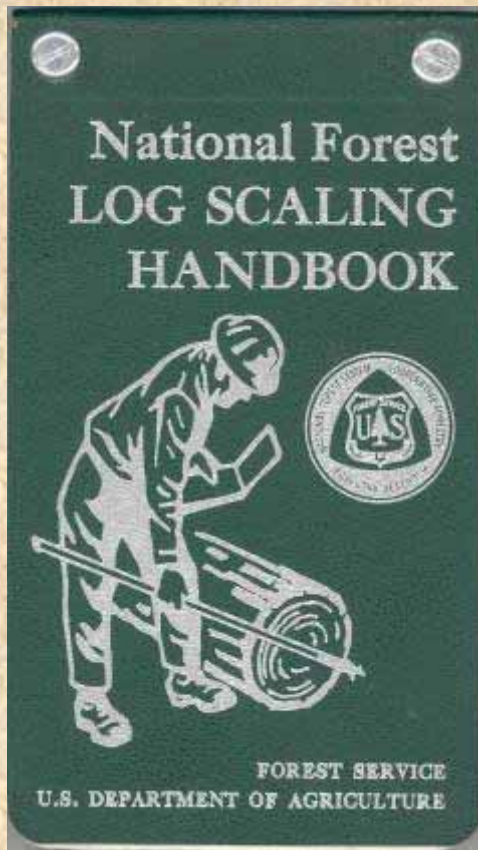
National Forest
Log Scaling Handbook
FSH 2409.11
Scribner Revision

Timber Measurements Society
Medford, Oregon
Oct 18 - 19, 2006
Camille Smith

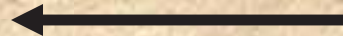


Revised May 1940
Reprinted October 1951

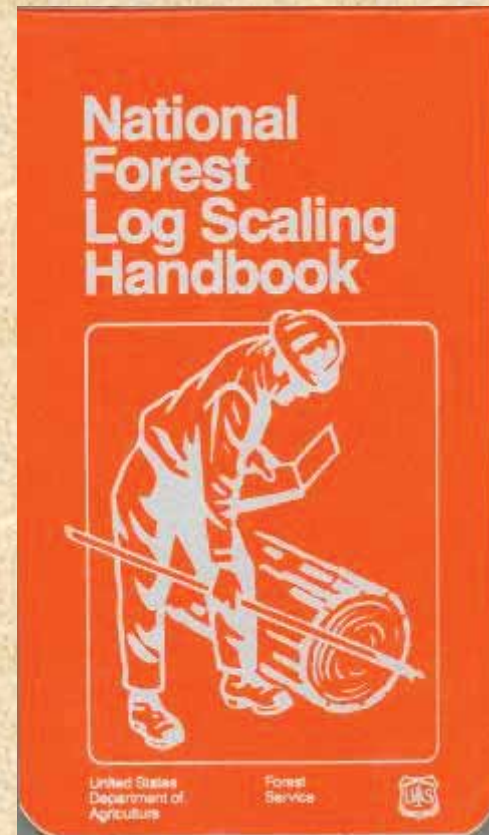
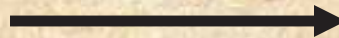
FSH 2409.11 ~ History



Amendment No. 4
September 1973



Amendment No. 6
May 1985







Scribner Scaling Rules Committee

Objective:

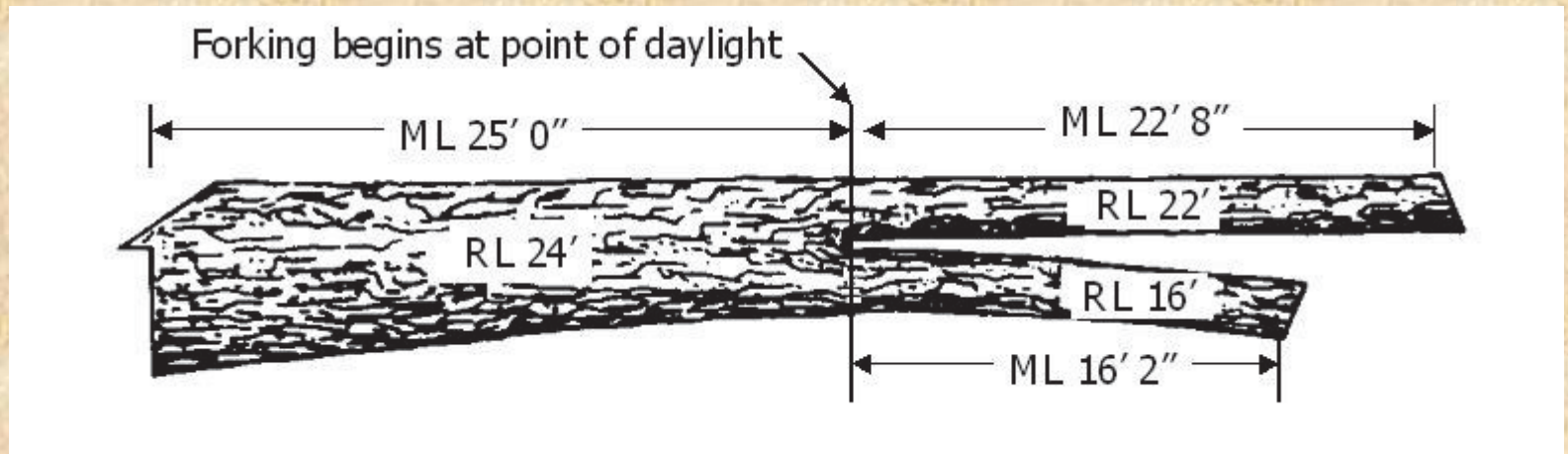
1. Review and update language to reflect current policy & practices.
2. Review and incorporate existing Regional supplements when topics are applicable nationally.
3. Add scaling rules for defects or topics that were not previously addressed and add language to clarify or expand existing rules.

Added Topics Include:

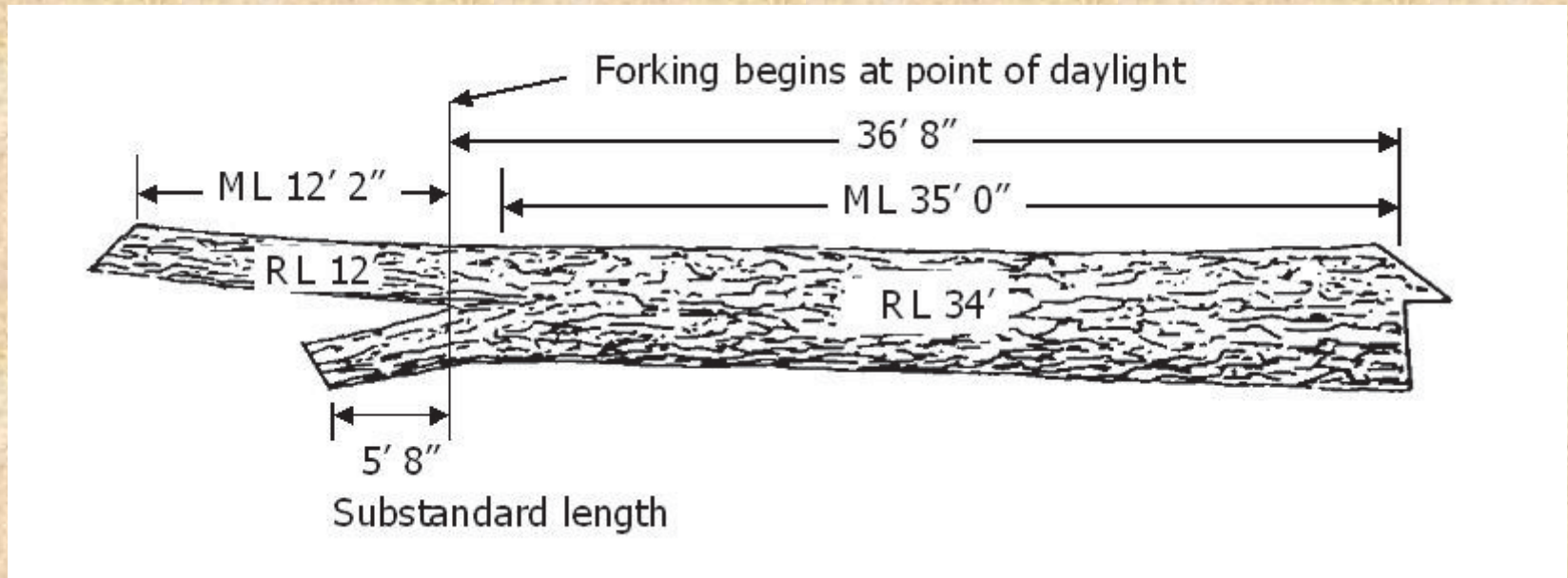
1. Measuring Forked Logs
2. Crook – Cross Grain
3. Pistol Butt – Cross Grain
4. Spiral Grain – Cross Grain
5. Foreign Material – nails, spikes, etc.

Added Topics Include:

6. Massed Pitch & Pitch Pockets
7. Knots
8. Pecky Rot
9. Fiber Scaling Rule
10. Sample Scaling Chapter



Forked Logs



Crook and Pistol Butt Defect

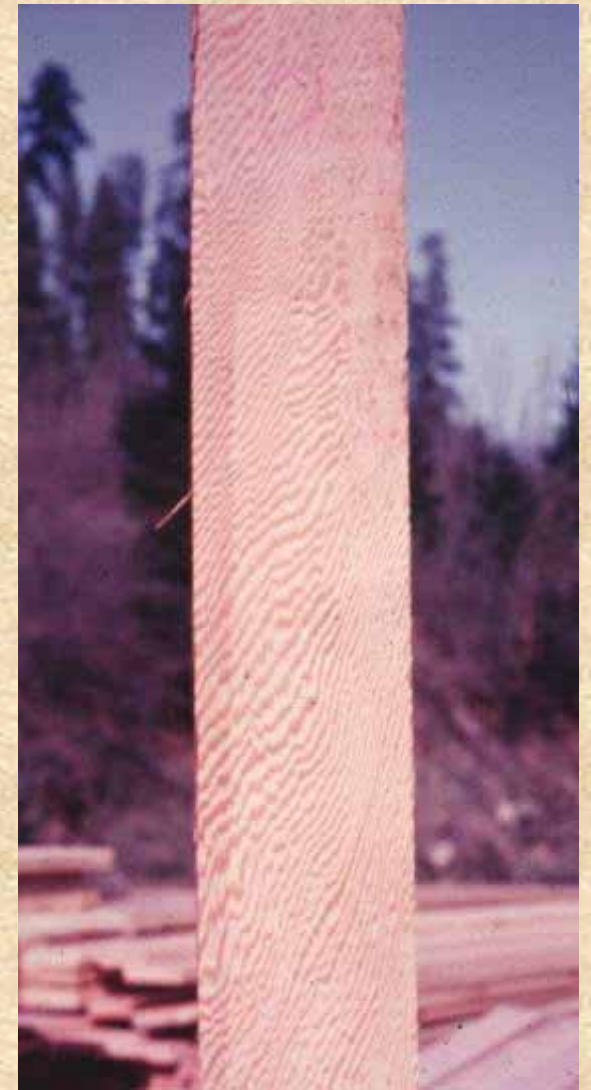
“Cross grain material is defined as grain deviation that exceeds 3 inches per foot from straight.”



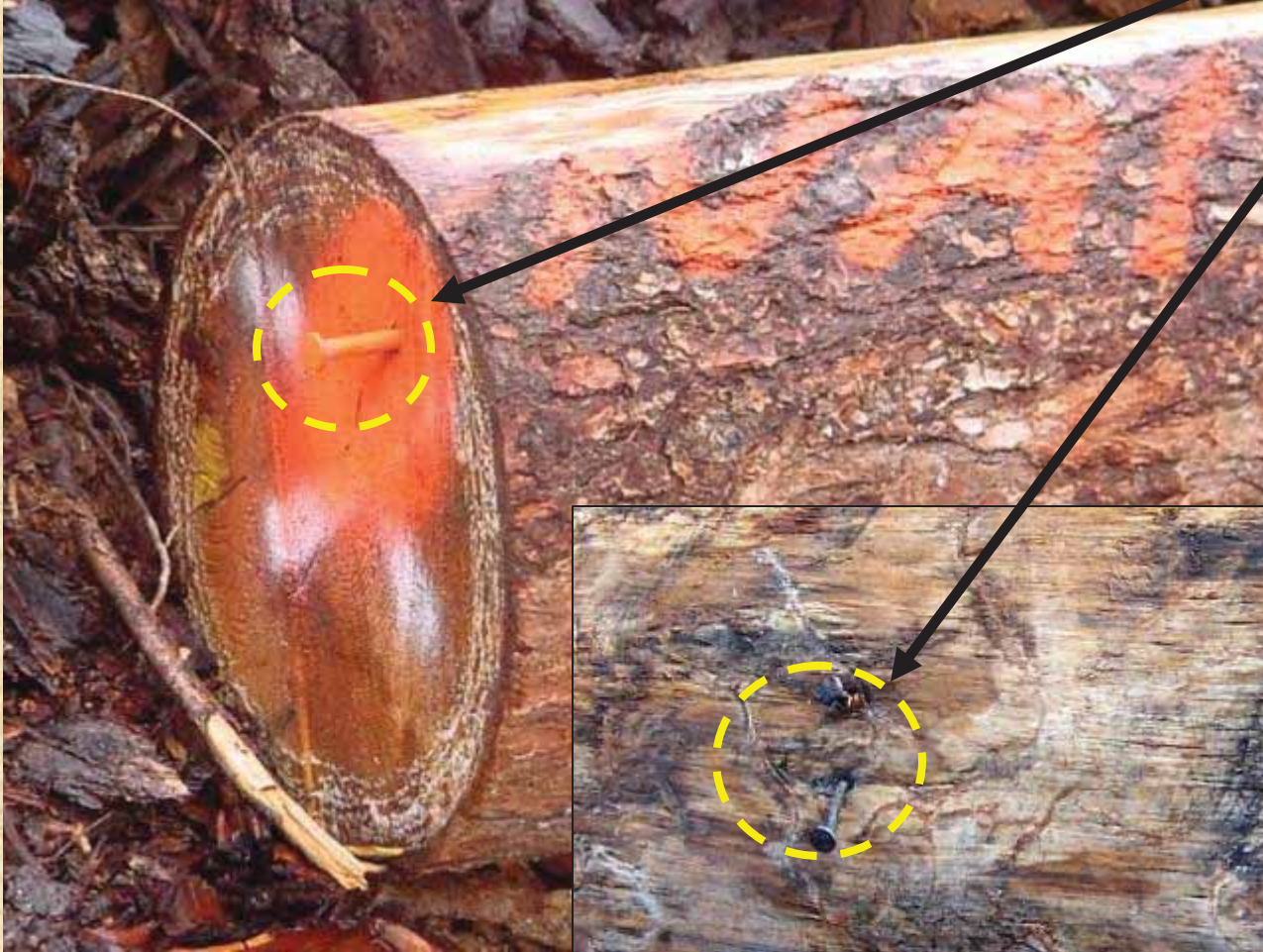


Spiral grain

“Any grain distortion that exceeds 3 inches per foot, or 1” in 4”, will require a deduction.”



Foreign Material



Massed Pitch and Pitch Pockets

Massed pitch ~ an accumulation of solid pitch.

- The concentration of pitch must cause an actual volume loss.
- No deduction is made for lightly saturated pitch.

Pitch Pockets ~ small scattered crescent shaped areas of pitch.

- Scattered pitch pockets need no deduction.
- Make a deduction only if an extreme concentration of pitch pockets causes an actual volume loss.

Oversize Knots



KNOT DEDUCTION GUIDE

Small End Diameter

5" to 15"

16" to 25"

26" to 35"

36" to 45"

46" & up

* Diameter Deduction

1"

2"

3"

4"

Scaler's judgment

* Reduce the defect volume if entire log surface or length is not affected.

Burls



Pecky Rot



Fiber Rule

Fiber scaling determines the wood content that is suitable for the production of usable pulp chips.

Fiber Defects

- Soft rots
- Voids
- Char
- Massed Pitch

Deduction Methods

- Squared Area
- Circular Area
- Length
- Diameter

Fiber logs are not pulpable (chipable) if:

- they are not debarkable
- they have char



Deductions will include 100% of the length affected.



**FOREST SERVICE HANDBOOK
NATIONAL HEADQUARTERS (WO)
WASHINGTON, DC**

FSH 2409.11 - NATIONAL FOREST LOG SCALING HANDBOOK

CHAPTER 90 - SAMPLE SCALING

Amendment No.: 2409.11-2007-

Effective Date:

Digest:

90 - This new chapter provides direction and technical descriptions for the various sampling system approved for use in sample scaling of National Forest System timber.

FSH 2409.11 ~ Future

Amendment No. 8 ???
Spring 2007 ???

