

Idaho Department of Lands

An aerial photograph of a vast, green forested landscape. In the center, a large, dark blue lake is surrounded by dense evergreen trees. The foreground shows a thick forest of tall, thin trees, with some lower vegetation in the bottom left corner. In the distance, rolling hills and mountains are visible under a clear sky.

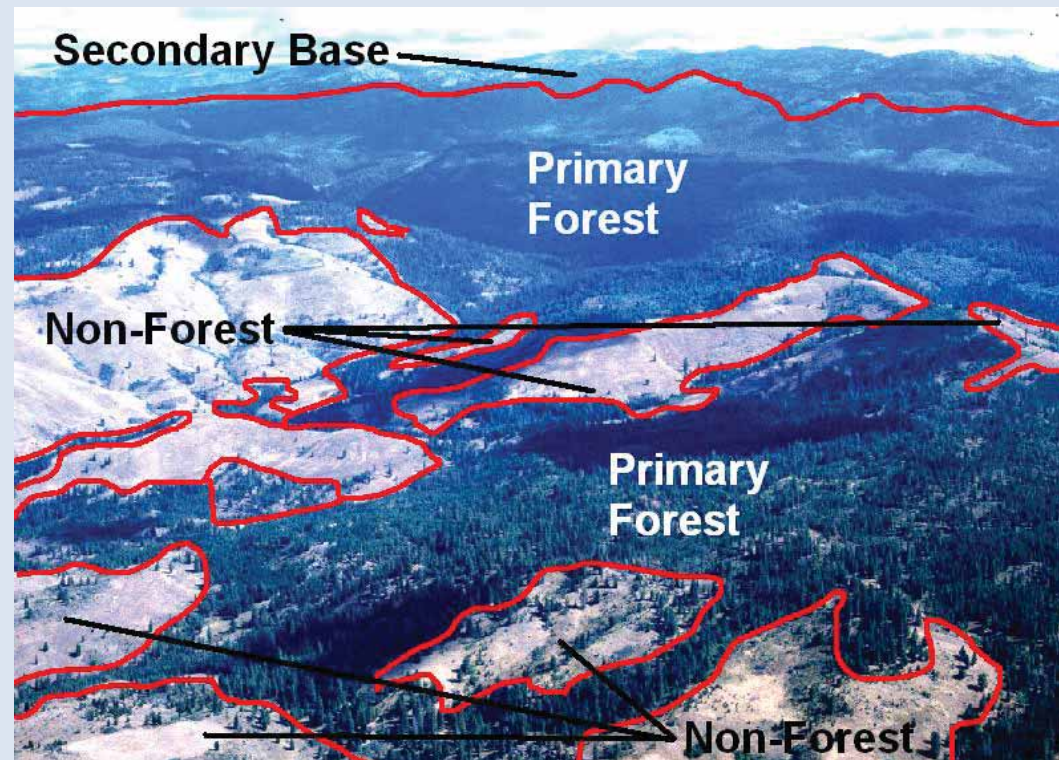
Sale of Timber by Weight

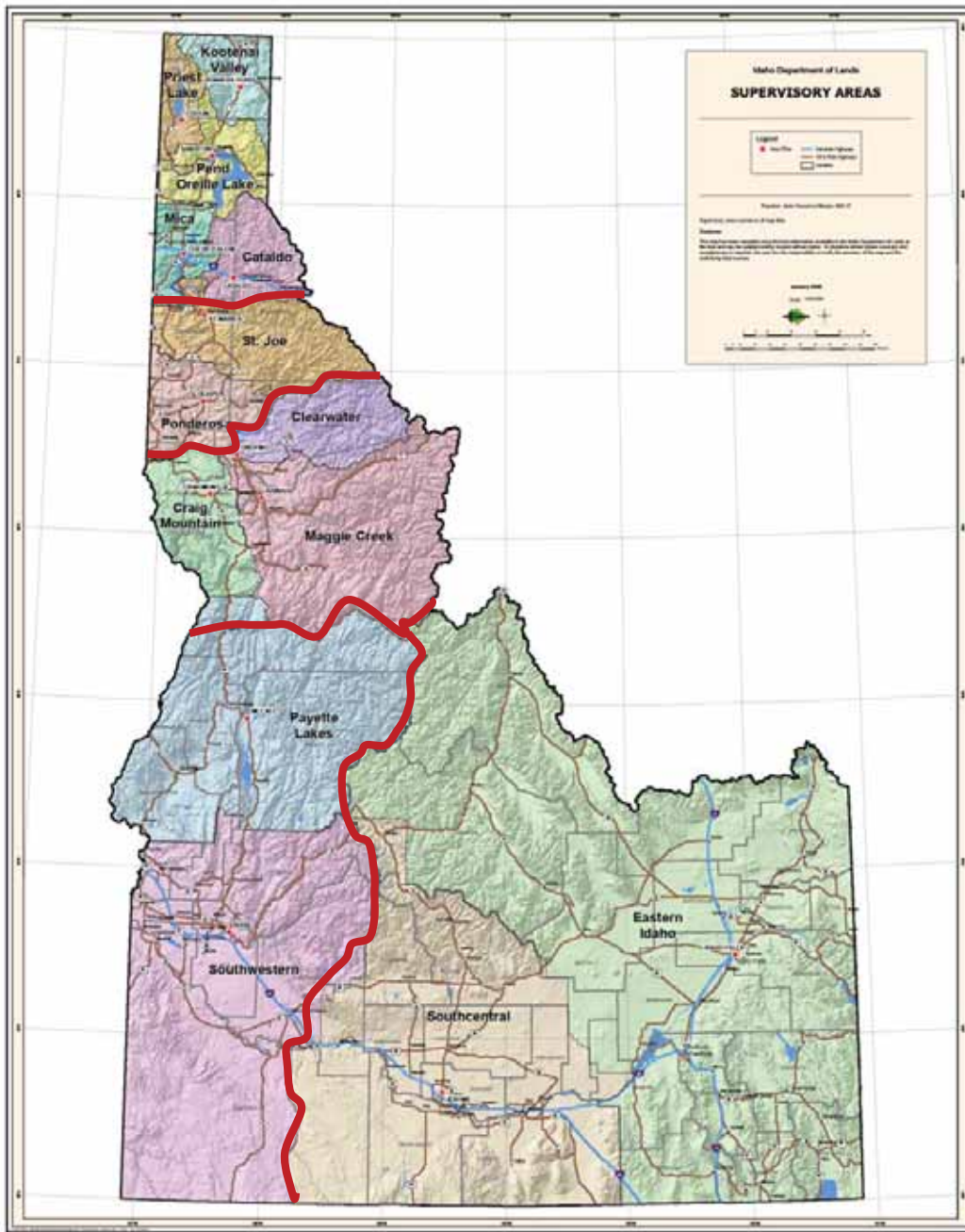
By

Pete Van Sickle

FOREST MANAGEMENT PROGRAM IN A NUTSHELL:

- 800,000 acres primary forest land
- 200,000 acres secondary forest land
- 60-100 timber sales annually
- 230 MMBF (2010) to 247 MMBF by 2013
- \$50 - \$80 million annual revenue for trust beneficiaries





IDL Harvest Plan

AREA	FY 10 Plan	FY 11 Plan	FY 12 Plan	FY 13 Plan	FY 14 Plan	FAMP Alt4
Priest Lake	17	17	16	16	16	16
Kootenai Valley	5	5	6	6	6	6
Pend Oreille	16	16	17	17	17	17
Mica	6	7	8	8	8	8
Cataldo	7	7	7	8	8	8
St. Joe	45	47	48	50	50	50
Ponderosa	31	31	37	42	42	42
Total North Ops	127	130	139	147	147	147
Clearwater	37	38	43	40	40	40
Maggie Creek	27	20	21	22	23	23
Craig Mountain	9	13	7	8	8	8
Payette Lake	17	17	15	17	15	15
Southwest	8	8	9	8	8	8
Eastern	5	4	5	5	6	6
Total South Ops	103	100	100	100	100	100
TOTAL (MMBF)	230	230	239	247	247	247

Log Scaling Program 2010

2010 Total Volume

CDAN 51,711.32

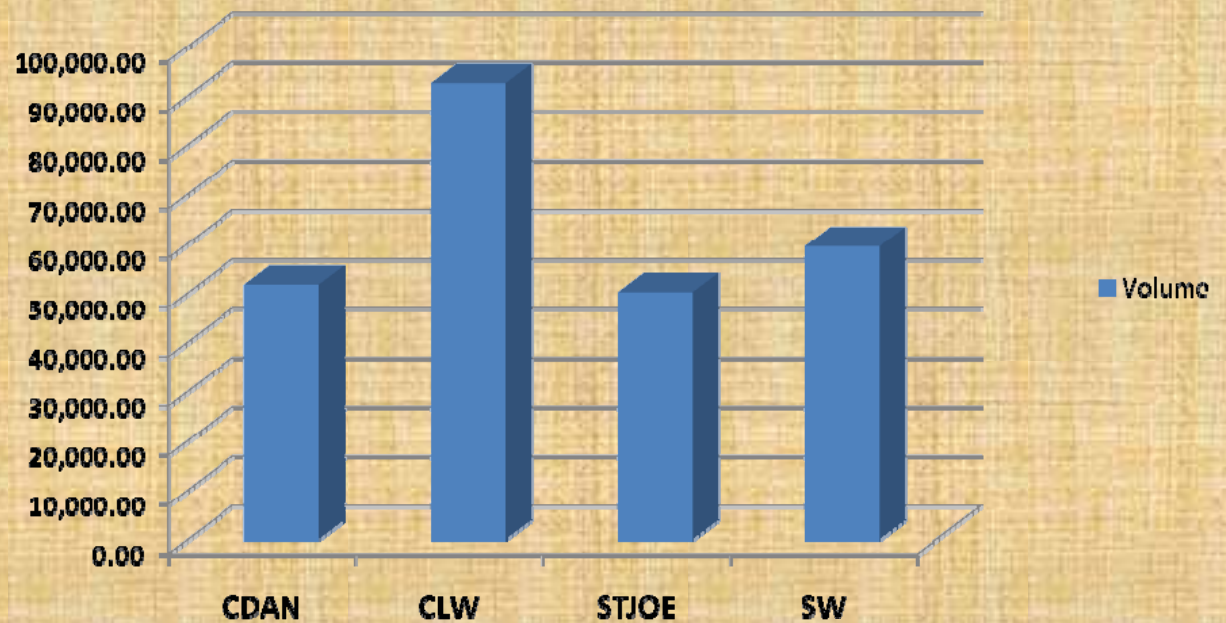
CLW 92,559.74

STJOE 50,187.17

SW 59,478.87

253,937.10

2010 Total



Volume Remaining Under contract

• Scale Area	Number of Sales	MBF
• CdAN	48	80,050
• Clw	47	131,986
• St. Joe/Pon	29	84,781
• SWI	<u>14</u>	<u>35,456</u>
	138	332,273

Ton Sale Program

- ≤ 10 " DBH Average stand diameter and
- All one species or;
- Similar species values or;
- Assigned Area
- Weight Factor Sampling

Weight Factors

- Weight Sampling
- Log Scaling of weight sample
- Limited by
 - Purchaser objectives
 - Purchaser sorting
 - Purchaser destinations
 - Species on weight sampled sale

Log Prices

YEAR	2011
QTR	1
MKT	(All)
Company	(All)
MILL	(All)

Row Labels	Values						
	Average of WP	Average of PP	Average of DFL	Average of GF&WH	Average of CE	Average of SP	Average of LP
Large	\$240	\$297	\$255	\$231	\$516	\$236	\$226
Medium	\$225	\$265	\$287	\$271	\$465	\$227	\$227
Small	\$237	\$213	\$275	\$269	\$441	\$260	\$261
Grand Total	\$235	\$249	\$275	\$264	\$457	\$251	\$251

Weight Factors

2010 Weight Factor Summary

Includes only 2010 load data

Mixed Species

Area	Net Vol.	lbs/bf	Tons/MBF	Total Weight	Total Loads
10	18,648.85	12.06	6.03	224,839,747.00	4079
20	9,578.82	11.98	5.99	114,772,819.00	2165
21	10,787.60	12.73	6.36	137,272,746.00	2245
22	3,076.08	11.81	5.90	36,325,660.00	666
30	47,129.77	9.71	4.85	457,421,775.00	9254
31	11,392.07	11.30	5.65	128,765,130.00	2547
40	37,486.98	10.49	5.25	393,268,916.00	7221
41	24,661.14	10.49	5.25	258,720,273.00	4741
42	22,479.84	10.60	5.30	238,243,624.00	4429
43	3,685.76	13.84	6.92	51,009,492.00	921
50	10,235.80	12.32	6.16	130,296,753.00	2190
60	2,508.78	11.34	5.67	30,463,820.00	554

Timber Cruise Summary

Summary of Cruise Data

Idaho Department of Lands use Only

IDLCRUISER_EXCEL_june_10_2009

Combined Units or Strata

Cruise Name	Lodgepole Whack & Stack	Cruise Design	Combined Strata	Plots	116
Cruise Number	30-0563	Cruise Intensity	2.16 (ac/plot)	Acres	251
Unit or Type	1,2,3	Cruise Region	North Idaho 2pt	Ac. from	Combined cruises
Cruise Date	2009			Cruisers	multiple

	TOTALS	WP	PP	DF	WL	GF	WH	AF	CE	ES	LP
		100FW2W119	100FW2W122	100FW2W202	100FW2W073	100FW2W017	100FW2W260	100FW2W019	100FW2W242	100FW2W093	100FW2W108
Volume equation											
Net MBF	3,927.8	28.4	0.0	548.4	376.1	755.2	89.8	0.0	141.1	55.6	1,934.2
Gross MBF	4,403.4	30.7	0.0	587.8	414.3	880.4	109.0	0.0	153.8	64.9	2,162.6
Local Volume Adjust %		5%	6%	6%	7%	8%	0%	1%	8%	2%	9%
Seen Defect %		2.7%	0.0%	3.7%	6.5%	11.1%	14.6%	0.0%	3.1%	10.6%	7.5%
Unseen Defect %		5%	5%	5%	5%	7%	5%	5%	5%	5%	3%
Total Defect %	10.8%	7.2%	0.0%	6.7%	9.5%	14.2%	17.6%	0.0%	8.3%	14.3%	10.6%
Ave. MBF/ ac.	15.6	0.1	0.0	2.2	1.5	3.0	0.4	0.0	0.6	0.2	7.7
Ave. DBH	12.3	14.7	0.0	15.3	13.5	13.0	9.9	0.0	11.3	21.0	11.8
Ave. Height	79.7	80.7	0.0	83.8	97.0	71.4	74.0	0.0	64.6	85.7	82.1
Ave. Merch. Height **	51	56.6	0.0	60.0	0.0	49.7	41.6	0.0	38.1	67.5	58.6
Logs / tree **	3.0	3.4	0.0	3.6	0.0	2.9	2.5	0.0	2.3	4.0	3.5
Trees / acre	137.5	0.6	0.0	10.5	9.5	22.6	7.2	0.0	10.7	0.6	75.8
16 ft.Logs / acre **	415	1.9	0.0	37.4	0.0	66.7	17.8	0.0	24.1	2.3	264.4
16 ft Logs / MBF net	26.5	17.0	0.0	17.1	0.0	22.2	49.8	0.0	42.9	10.2	34.3
16 ft Logs / MBF gross	23.6	15.8	0.0	16.0	0.0	19.0	41.0	0.0	39.4	8.8	30.7
Ave.Board feet / tree	114	198	0	209	157	133	49	0	52	395	102
Basal Area / Acre	119.7	0.7	0.0	15.5	10.4	23.2	3.9	0.0	7.9	1.4	56.7
% Species / MBF	100%	1%	0%	14%	10%	19%	2%	0%	4%	1%	49%
% Species / TPA	100%	1%	0%	7%	5%	37%	3%	0%	5%	1%	41%
Slash<3" (tons/ac.)	13.1	0.0	0.0	1.7	0.6	3.5	0.4	0.0	0.9	0.2	5.6
Pulp or product (MBF)	15.1	0	0	0	0	8	0	0	0	0	7
Sawlog (tons)	23,842	171	0	2,923	2,111	5,990	626	0	658	344	11,018
Non Sawlog (tons)	898	4	0	52	85	170	54	0	40	0	493
Lbs / Bf.	12.14	12.04	0.00	10.66	11.26	15.87	13.95	0.00	9.33	12.38	11.39
Tons / MBF	6.1	13.9	0.0	16.9	12.7	21.5	7.0	0.0	91.0	11.6	19.7
Non Sawlogs (tons)	898	4	0	52	85	170	54	0	40	0	493
Non Sawlog (MBF@140bf/ton)	126	1	0	7	12	24	8	0	6	0	69
Topwood @ 8bf/tree	147	1	0	1	11	23	10	0	13	0	88
% MBF Change for 20 ft Logs **	-12%	-13%	0%	-12%	-10%	-10%	-17%	0%	-22%	-8%	-12%
% MBF Change for 32 Logs **	0%	0%	0%	0%	0%	0%	0%	0%	0%	-2%	0%
% MBF Change for 40 foot Logs **	-12%	-15%	0%	-12%	-10%	-11%	-17%	0%	-23%	-11%	-12%
# measured trees	154	3	0	23	11	63	1	0	6	5	42
# counted trees	430	6	13	40	19	169	6	0	16	11	150
count and measure	584	9	13	63	30	232	7	0	22	16	192
Count/Measure Ratio	3.79	3.00	1.00	2.74	2.73	3.68	7.00	1.00	3.67	3.20	4.57

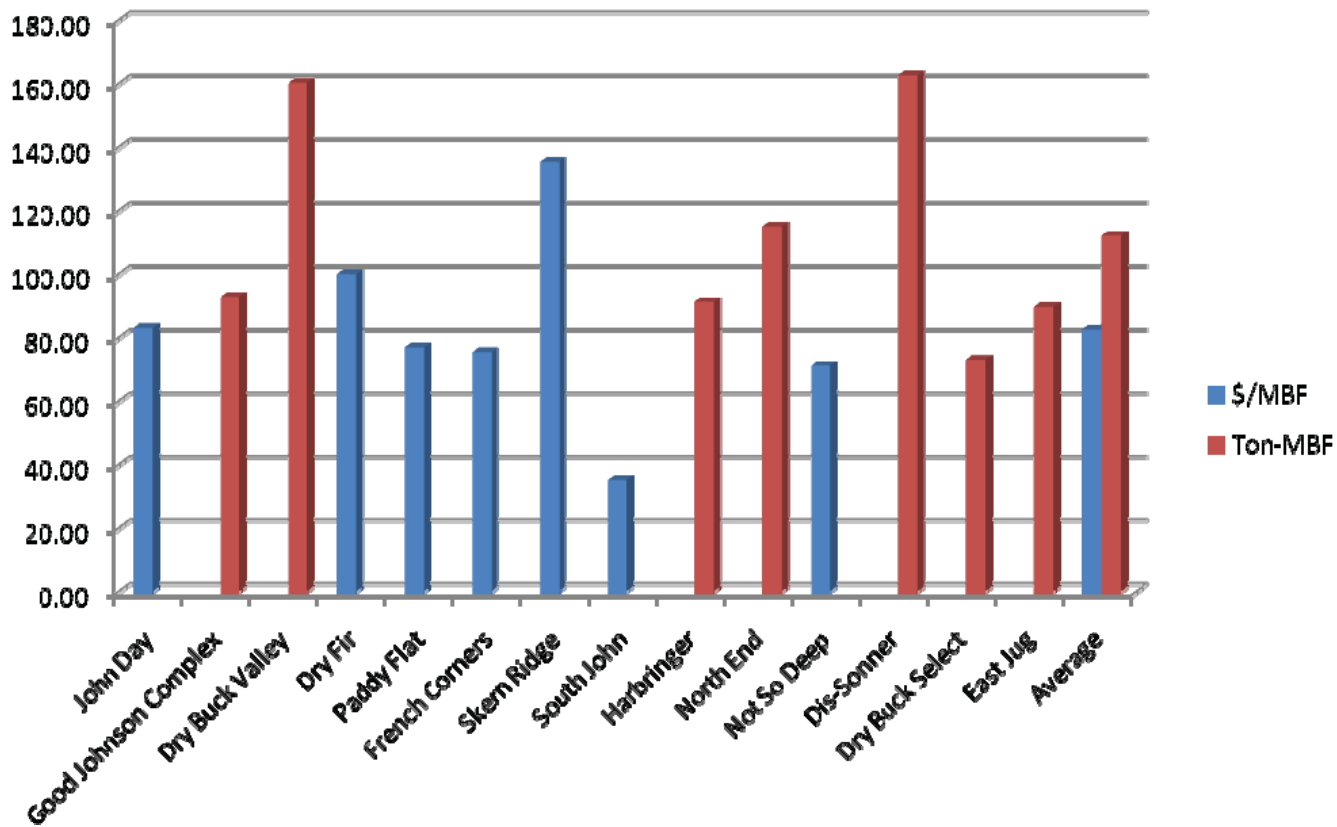
Timber Cruise Weight Factor

Pulp or product (MBF)	10.1
Sawlog (tons)	23,842
Non Sawlog (tons)	898
Lbs / Bf.	12.14
Tons / MBF	6.1
Non Sawlogs (tons)	898
Non Sawlog (MBF@140bf/ton)	126
Topwood @ 6bf/tree	147

Sale Performance History

Sale Date	Sale Name	\$/MBF	Ton-MBF
6/1/2009	John Day	83.00	
6/23/2009	Good Johnson Complex		92.99
7/21/2009	Dry Buck Valley		160.31
7/23/2009	Dry Fir	100.00	
8/26/2009	Paddy Flat	76.99	
9/1/2009	French Corners	75.50	
9/3/2009	Skern Ridge	135.50	
1/13/2010	South John	35.32	
4/13/2010	Harbringer		91.12
4/13/2010	North End		115.10
4/20/2010	Not So Deep	71.09	
7/20/2010	Dis-Sonner		162.59
7/29/2010	Dry Buck Select		73.14
9/15/2010	East Jug		89.48
	Average	82.49	112.11

MBF vs Ton Sale Performance



IDL Future Ton Sale Objectives

- Add Delivered Product Sales with Ton Option
- Add ≤ 12 " diameter volume
- Add specific Areas
- Gradually increase the amount of Ton sale volume
- Reach 80% ton sale by volume by 2016
- Continue collection of weight factor information
- Continue to scale 24" + logs.